

ELECTRICAL AND ELECTRONIC EQUIPMENT  
MECHANICS, INSTALLERS, AND REPAIRERS

VEHICLE AND MOBILE EQUIPMENT MECHANICS,  
INSTALLERS AND REPAIRERS

MISCELLANEOUS INSTALLATION, MAINTENANCE, AND  
REPAIR OCCUPATIONS

OTHER INSTALLATION, MAINTENANCE, AND REPAIR  
OCCUPATIONS

INSTALLATION, MAINTENANCE & REPAIR

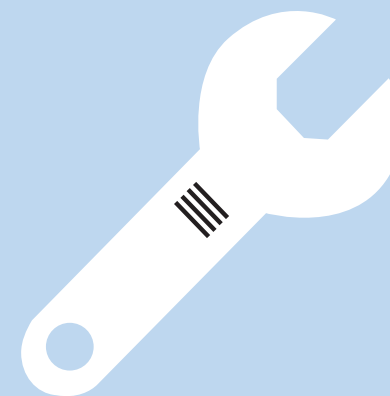


**Occupational Outlook Handbook (2012-13 Edition)**

United States Department of Labor  
U.S. Bureau of Labor Statistics  
2 Massachusetts Avenue, NE  
Washington, DC 20212-0001  
(202) 691-5200 [www.bls.gov/OCO/](http://www.bls.gov/OCO/)

# *Installation, Maintenance & Repair*

6 OCCUPATIONS

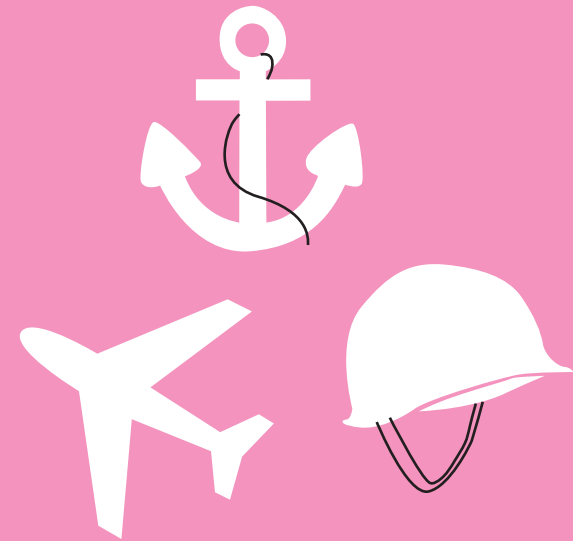


2013

# *Armed Forces*



23 OCCUPATIONS



ARMED FORCES



**Occupational Outlook Handbook (2012-13 Edition)**

United States Department of Labor  
U.S. Bureau of Labor Statistics  
2 Massachusetts Avenue, NE  
Washington, DC 20212-0001  
(202) 691-5200 [www.bls.gov/OCO/](http://www.bls.gov/OCO/)

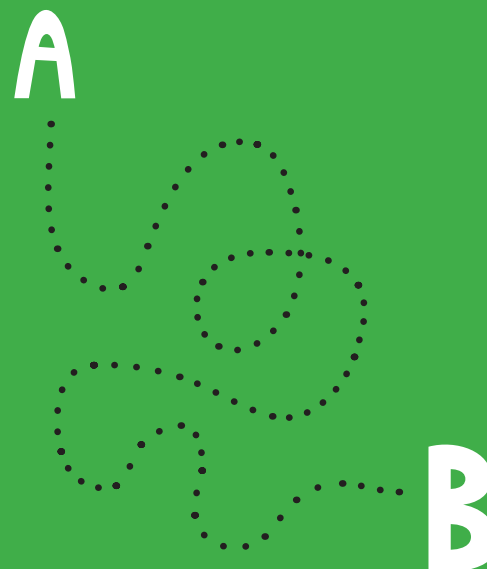
2013

AIR TRANSPORTATION OCCUPATIONS  
MOTOR VEHICLE OPERATORS  
RAIL TRANSPORTATION OCCUPATIONS  
WATER TRANSPORTATION OCCUPATIONS  
MATERIAL MOVING OCCUPATIONS

TRANSPORTATION & MATERIAL MOVING

# *Transportation & Material Moving*

.....  
23 OCCUPATIONS



2013

.....  
**Occupational Outlook Handbook (2012-13 Edition)**

United States Department of Labor  
U.S. Bureau of Labor Statistics  
2 Massachusetts Avenue, NE  
Washington, DC 20212-0001  
(202) 691-5200 [www.bls.gov/OCO/](http://www.bls.gov/OCO/)

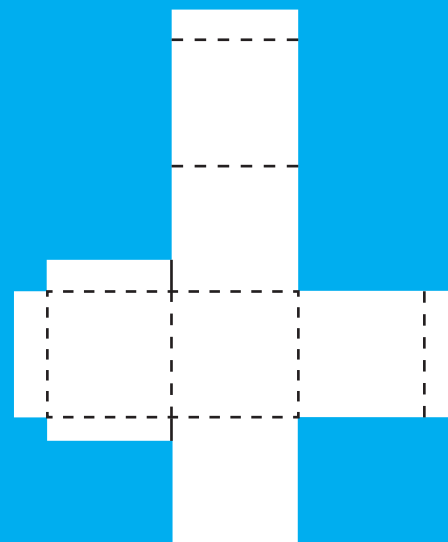
.....  
**A**  
**B**

ASSEMBLERS AND FABRICATORS  
FOOD PROCESSING OCCUPATIONS  
METAL WORKERS AND PLASTIC WORKERS  
PRINTING OCCUPATIONS  
TEXTILE, APPAREL, AND FURNISHINGS OCCUPATIONS  
WOODWORKERS  
PLANT AND SYSTEM OPERATORS  
MISCELLANEOUS PRODUCTION OCCUPATIONS  
OTHER PRODUCTION OCCUPATIONS

PRODUCTION

# *Production*

-----  
23 OCCUPATIONS



**Occupational Outlook Handbook (2012-13 Edition)**

United States Department of Labor  
U.S. Bureau of Labor Statistics  
2 Massachusetts Avenue, NE  
Washington, DC 20212-0001  
(202) 691-5200 [www.bls.gov/OCO/](http://www.bls.gov/OCO/)



2013

CONSTRUCTION TRADES AND RELATED WORKERS

**Occupational Outlook Handbook (2012-13 Edition)**

United States Department of Labor  
U.S. Bureau of Labor Statistics  
2 Massachusetts Avenue, NE  
Washington, DC 20212-0001  
(202) 691-5200 [www.bls.gov/OCO/](http://www.bls.gov/OCO/)

CONSTRUCTION TRADES



# *Construction Trades*



23 OCCUPATIONS



2013

FINANCIAL CLERKS

INFORMATION AND RECORD CLERKS

MATERIAL RECORDING, SCHEDULING, DISPATCHING, AND  
DISTRIBUTING OCCUPATIONS

MISCELLANEOUS OFFICE AND ADMINISTRATIVE  
SUPPORT OCCUPATIONS

OFFICE & ADMINISTRATIVE SUPPORT

**Occupational Outlook Handbook (2012-13 Edition)**

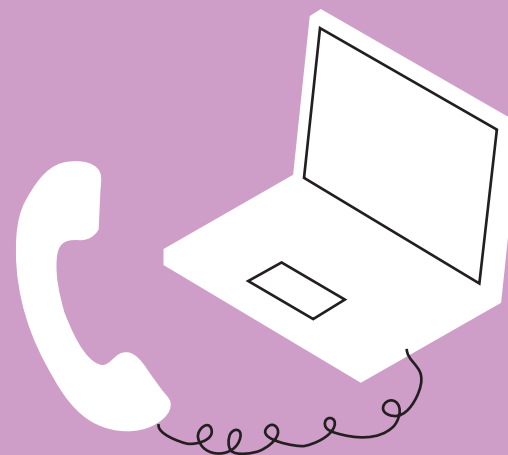
United States Department of Labor  
U.S. Bureau of Labor Statistics  
2 Massachusetts Avenue, NE  
Washington, DC 20212-0001  
(202) 691-5200 [www.bls.gov/OCO/](http://www.bls.gov/OCO/)



# Office & Administrative Support



23 OCCUPATIONS



2013

SALES AND RELATED OCCUPATIONS  
OTHER SALES AND RELATED OCCUPATIONS

**Occupational Outlook Handbook (2012-13 Edition)**

United States Department of Labor  
U.S. Bureau of Labor Statistics  
2 Massachusetts Avenue, NE  
Washington, DC 20212-0001  
(202) 691-5200 [www.bls.gov/OCO/](http://www.bls.gov/OCO/)

SALES



# *Sales*

23 OCCUPATIONS



2013

HEALTHCARE SUPPORT OCCUPATIONS  
PROTECTIVE SERVICE OCCUPATIONS  
FOOD PREPARATION AND SERVING RELATED  
OCCUPATIONS  
BUILDING AND GROUNDS CLEANING AND  
MAINTENANCE OCCUPATIONS  
PERSONAL CARE AND SERVICE OCCUPATION

SERVICE



**Occupational Outlook Handbook (2012-13 Edition)**

United States Department of Labor  
U.S. Bureau of Labor Statistics  
2 Massachusetts Avenue, NE  
Washington, DC 20212-0001  
(202) 691-5200 [www.bls.gov/OCO/](http://www.bls.gov/OCO/)

# *Service*

23 OCCUPATIONS



2013



MANAGEMENT OCCUPATIONS

BUSINESS AND FINANCIAL OPERATIONS  
OCCUPATIONS

**Occupational Outlook Handbook (2012-13 Edition)**

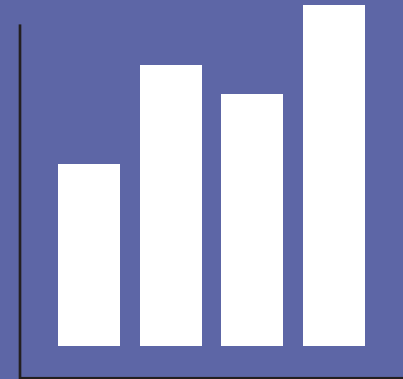
United States Department of Labor  
U.S. Bureau of Labor Statistics  
2 Massachusetts Avenue, NE  
Washington, DC 20212-0001  
(202) 691-5200 [www.bls.gov/OCO/](http://www.bls.gov/OCO/)

MANAGEMENT



# *Management*

23 OCCUPATIONS



2013

COMPUTER AND MATHEMATICAL OCCUPATIONS  
ARCHITECTS, SURVEYORS, AND CARTOGRAPHERS  
ENGINEERS  
DRAFTERS AND ENGINEERING TECHNICIANS  
LIFE SCIENTISTS  
PHYSICAL SCIENTISTS  
SOCIAL SCIENTISTS AND RELATED OCCUPATIONS  
SCIENCE TECHNICIANS  
COMMUNITY AND SOCIAL SERVICES OCCUPATIONST  
LEGAL OCCUPATIONS  
EDUCATION, TRAINING, LIBRARY, AND MUSEUM  
OCCUPATIONS  
ART AND DESIGN OCCUPATIONS  
ENTERTAINERS, AND PERFORMERS, SPORTS AND  
RELATED OCCUPATIONS  
MEDIA AND COMMUNICATION RELATED OCCUPATIONS  
HEALTH DIAGNOSING AND TREATING PRACTITIONERS  
HEALTH TECHNOLOGISTS AND TECHNICIANS  
OTHER PROFESSIONAL AND RELATED OCCUPATIONS

**Occupational Outlook Handbook (2012-13 Edition)**

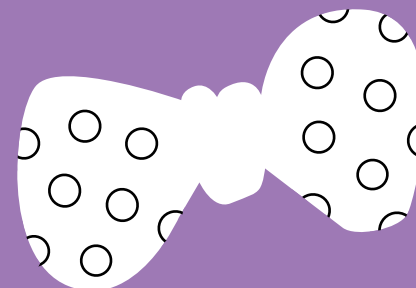
United States Department of Labor  
U.S. Bureau of Labor Statistics  
2 Massachusetts Avenue, NE  
Washington, DC 20212-0001  
(202) 691-5200 [www.bls.gov/OCO/](http://www.bls.gov/OCO/)

PROFESSIONALS  
& RELATED



# *Professionals & Related*

23 OCCUPATIONS



2013